



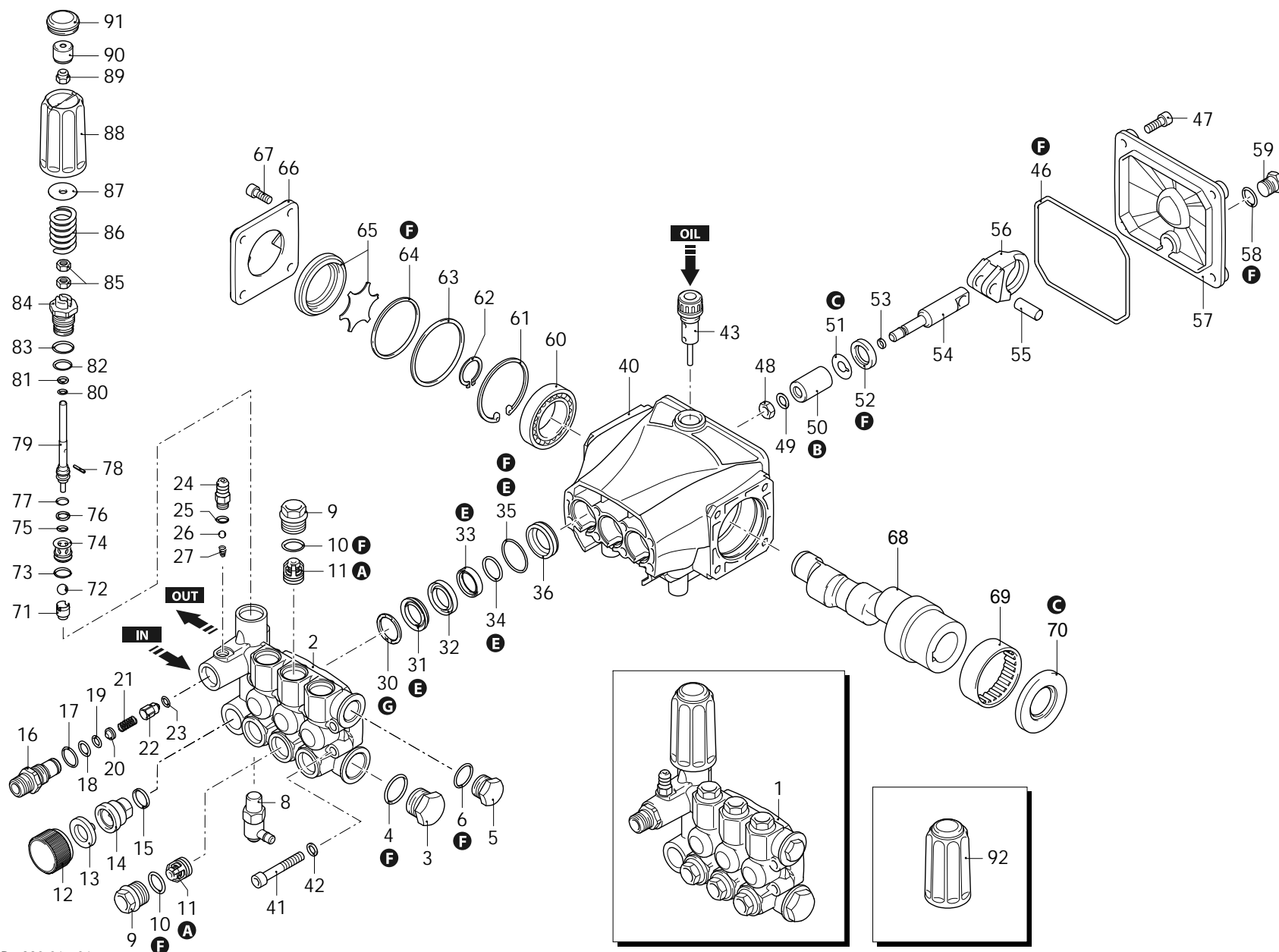
Series 320

RCV

D

3400rpm

ø 3/4"



AR_s320-01_v01



Series 320

RCV

D

3400rpm

ø 3/4"

P	Code	Description	Q	Note	Validity	P	Code	Description	Q	Note	Validity
1	3209204	Head assembly	Ø 15	1		47	3200220	Screw	TCEI 6x16	4	C=8Nm
2	3200930	Head		1		48	1260110	Nut	M8	3	Screw with Loxeal 55-14 / C=12Nm
3	820361	Plug	1/2" G brass	1	C=40Nm	49	1260100	Washer		3	
4	180101	O-ring	Ø 17,5x2	1	Lubricate with grease Molykote PG54	50	1260120	Piston	Ø 15	3	
5	1980740	Plug	3/8" G brass	1	C=20Nm	51	1260091	Plate		3	
6	740290	O-ring	Ø 14x1,78	1	Lubricate with grease Molykote PG54	52	1260460	Oil seal		3	
8	2761580	Valve	thermal	1		53	480480	O-ring	Ø 4,48x1,78	3	
9	3200110	Plug		6	Screw with Loxeal 55-14 / C=24,5Nm	54	3200060	Piston	guide	3	
10	1200690	O-ring	Ø 15,6x1,78	6	Lubricate with grease Molykote PG54	55	1780050	Pin		3	
11	2769050	Complete valve		6		56	3200040	Connecting-rod	aluminium	3	Lubricate with grease Molykote G807
12	2840270	Fitting		1		57	3200030	Cover		1	
13	1266330	Filter		1		58	820510	O-ring	Ø 10,82x1,78	1	
14	2841230	Fitting	aluminium	1	Screw with Loxeal 55-14 / C=25Nm	59	880581	Plug	1/4" G brass	1	Screw with Loxeal 55-14 / C=15Nm
15	2840890	O-ring	Ø 14x2	1		60	1780490	Bearing		1	
16	2760230	Fitting	3/8" G (M)	1	Screw with Loxeal 55-14 / C=40Nm	61	1260790	Ring	seeger Øl 52	1	
17	394280	O-ring	Ø 12,42x1,78	1	Lubricate with grease Molykote PG54	62	1780550	Ring	seeger Øe 20	1	
18	2760270	O-ring	Ø 12x1	1	Lubricate with grease Molykote PG54	63	3201860	Ring	Ø 51,8x0,5	1	
19	1470210	O-ring	Ø 9x1	1		64	395081	O-ring	Ø 47,30x2,62	1	
20	2760120	Injector	Ø 2,0	1		65	3209615	Oil level assembly		1	
21	2760200	Spring		1		66	3200070	Support		1	
22	2760131	Shutter		1		67	1200430	Screw	TCEI M6x16	4	Screw with Loxeal 55-14 / C=10Nm
23	2101770	O-ring	Ø 4x2,5	1	90 Sh	68	3200340	Shaft	7 marked	1	
24	1982520	Hose tail	Ø 8	1	Screw with Loxeal 55-14 / C=4Nm	69	1321190	Bearing		1	Assemble with tool [1780610]
25	480480	O-ring	Ø 4,48x1,78	1		70	480671	Ring	seal	1	Assemble with tool [1781000]
26	1250280	Ball		1		71	3200560	Guide		1	
27	1560520	Spring		1		72	3200590	Ball		1	
30	2760220	Ring	support Ø 15	3		73	770140	O-ring	Ø 11,11x1,78	1	Lubricate with grease Molykote PG54
31	1342761	Water seal	Ø 15	3	Lubricate with grease Molykote PG54	74	3200550	Seat		1	
32	3200160	Piston guide	front Ø 15	3		75	660191	O-ring	Ø 6,07x1,78	1	Lubricate with grease Molykote PG54
33	3200690	Gasket	Ø 15	3	Lubricate with grease Molykote PG54	76	1080401	Ring	anti-extrusion	1	
34	3200700	Ring	anti-extrusion	3		77	480560	O-ring	Ø 6,75x1,78	1	Lubricate with grease Molykote PG54
35	770590	O-ring	Ø 21,95x1,78	3	Lubricate with grease Molykote PG54	78	3201820	Pin		1	
36	3200150	Piston guide	rear Ø 15	3		79	3200510	Piston		1	
40	3200010	Pump body		1		80	770090	O-ring	Ø 5,28x1,78	1	
41	800410	Screw	TCEI M6x40	8	C=10,4Nm	81	3200540	Ring	anti-extrusion	1	
42	1381550	Washer		8		82	394280	O-ring	Ø 12,42x1,78	1	Lubricate with grease Molykote PG54
43	3201890	Oil plug	with oil dipstick	1		83	1200690	O-ring	Ø 15,6x1,78	1	Lubricate with grease Molykote PG54
46	2760280	O-ring	Ø 101,27x2,62	1		84	3200530	Piston guide		1	Screw with Loxeal 55-14 / C=35Nm

Revision: 1

Oil type: SAE 15W40

Attachment:

Date: 29/09/2023

Oil quantity: 0,260 Kg

*C= Tightening torque (Tolerance +0 ÷ -10%)*** = Not present for electric pump*



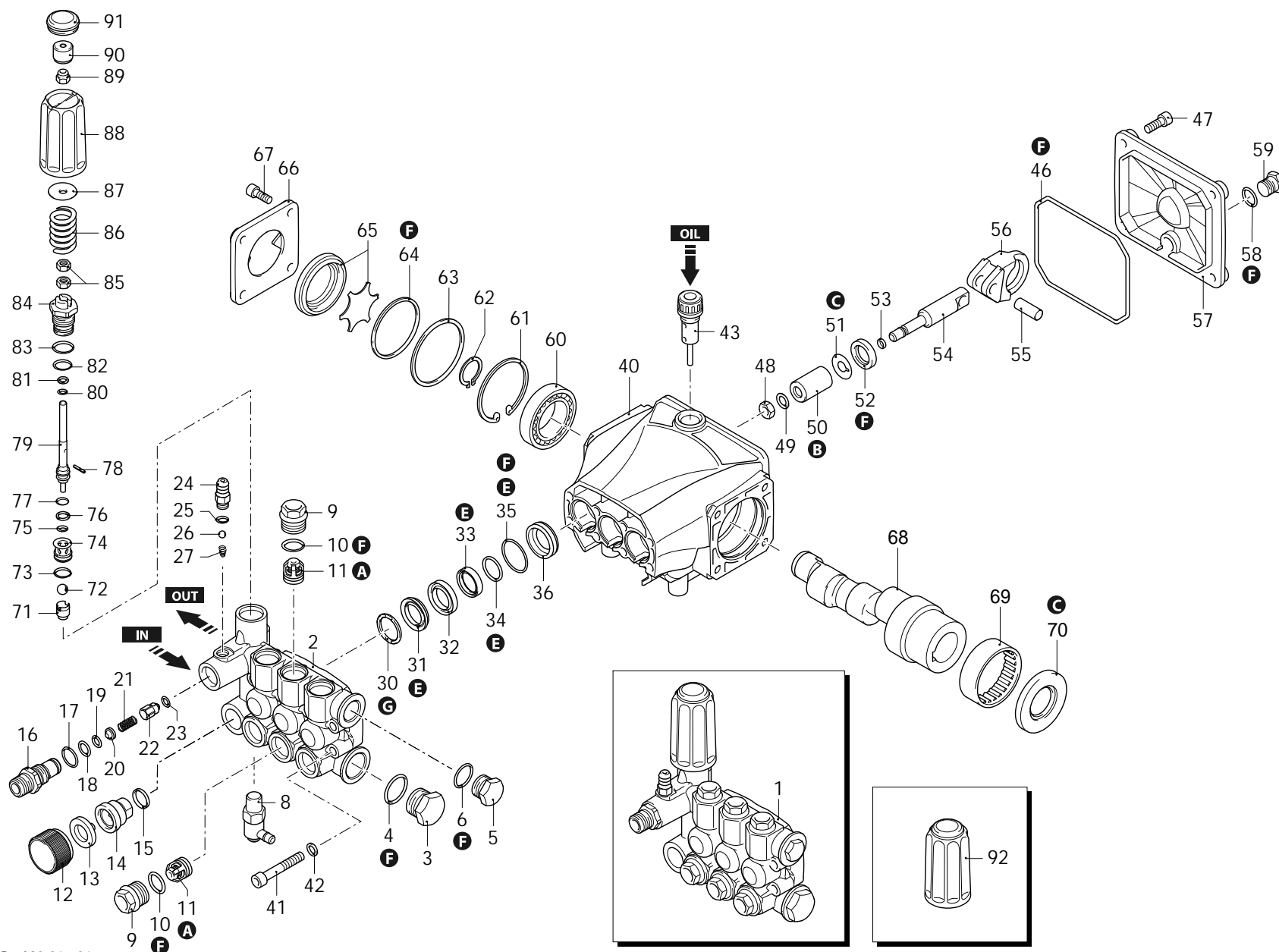
Series 320

RCV

D

3400rpm

ø 3/4"



AR_s320-01_v01



Series 320

RCV

D

3400rpm

Ø 3/4"

P	Code	Description	Q	Note	Validity	P	Code	Description	Q	Note	Validity
85	1980300	Nut	M6	2							
86	3201340	Spring		1							
87	3200600	Washer		1							
88	3200480	Knob		1							
89	3000170	Nut	M6	1							
90	3200520	Bushing		1							
91	3200500	Plug		1							
92	42712	Valve kit adjustment		1							
A	2186	Valve kit		1							
B	42475	Piston kit	Ø 15	1							
C	42474	Oil seal kit		1							
E	42476	Water seal kit	Ø 15	1							
F	42470	Gasket kit		1							
G	2191	Support ring kit	Ø 15	1							

Revision: 1

Oil type: SAE 15W40

Attachment:

Date: 29/09/2023

Oil quantity: 0,260 Kg

$C = \text{Tightening torque (Tolerance } +0 \div -10\%)$

* = Not present for electric pump

23971 - RCV 3.5G25 D + F7



Series 320

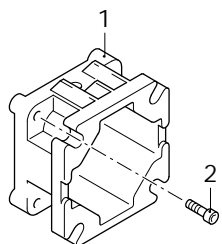
RCV

D

3400rpm

Ø 3/4"

P	Code	Description		Q	Note	Validity
1	1320050	Flange	F7	1		
2	1200430	Screw	TCEI M6x16	4	Screw with Loxeal 55-14 / C=10Nm	



F7

AR-1_flangia-22_v01

Revision: 1

Oil type: SAE 15W40

Attachment:

Date: 29/09/2023

Oil quantity: 0,260 Kg

C= Tightening torque (Tolerance +0 ÷ -10%)

23971 - RCV 3.5G25 D + F7